

I ENG. MGR.
I ENG.
I MKTG.
I EL. LAB

MECHANICAL VALUES

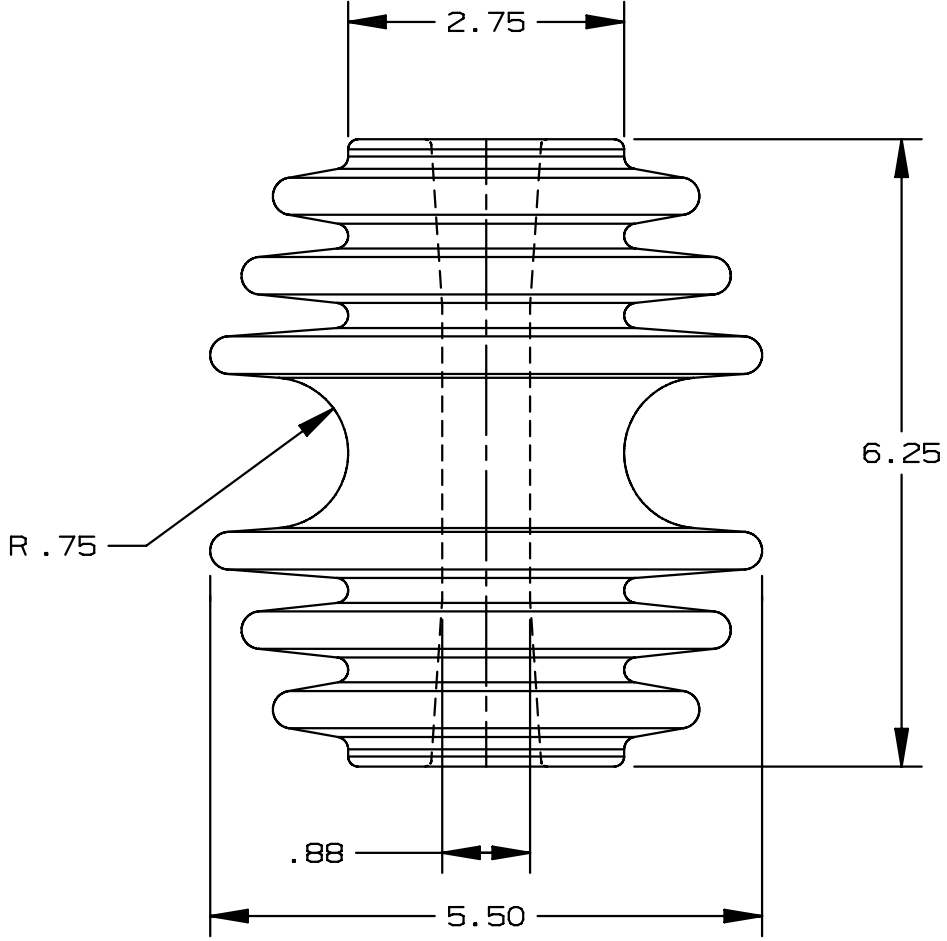
TRANSVERSE STRENGTH LB 8,000

ELECTRICAL VALUES

60 HERTZ FLASHOVER-DRY	kV	45
60 HERTZ FLASHOVER-WET		
VERTICAL	kV	35
HORIZONTAL	kV	40
IMPULSE FLASHOVER, POS	kV	67
IMPULSE FLASHOVER, NEG	kV	76

PACKING INFORMATION

NET WEIGHT , PER 100	LB	580
PACKED WEIGHT , PER 100	LB	631
NO. IN STANDARD PACKAGE		9



THIS DRAWING IS THE PROPERTY OF VICTOR INSULATORS, INC. AND CONTAINS PROPRIETARY AND CONFIDENTIAL INFORMATION WHICH MUST NOT BE DUPLICATED, USED, OR DISCLOSED OTHER THAN AS EXPRESSLY AUTHORIZED BY VICTOR INSULATORS, INC.

4-7-95	TP			A
12-19-94	RR			

	Victor Insulators, Inc.
	280 MAPLE AVENUE
	MAIL: P.O. BOX B, VICTOR, NEW YORK 14564
	TELEPHONE: (716)924-2127

2030