

SPOOL INSULATOR

CAT. NO. 2014

ANSI CLASS 53-5

30

MECHANICAL VALUES

TRANSVERSE STRENGTH LB 6,000

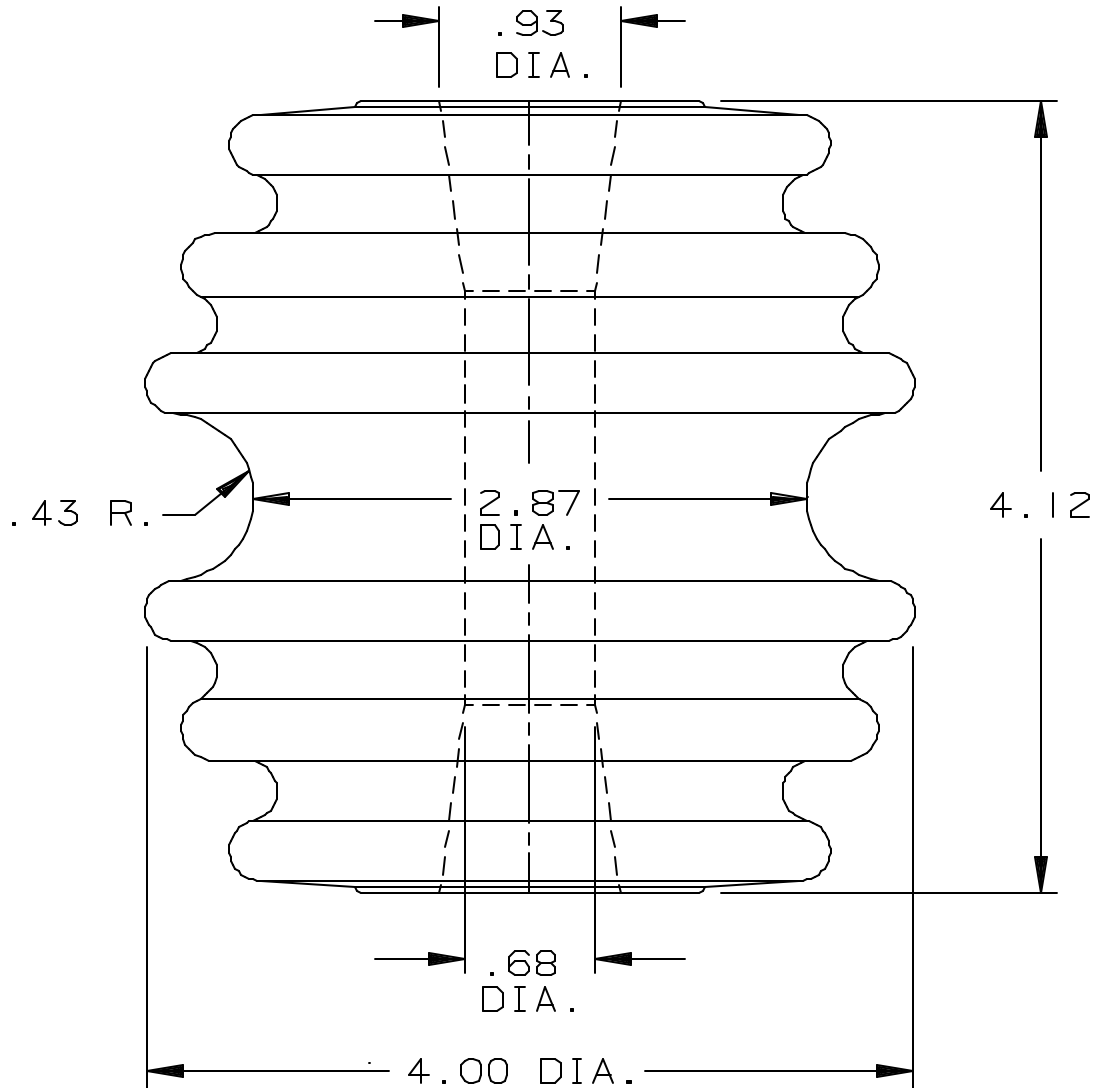
ELECTRICAL VALUES

60 HERTZ FLASHOVER-DRY	kV	35
60 HERTZ FLASHOVER-WET	kV	18
VERTICAL	kV	25
HORIZONTAL		

PACKING INFORMATION

NET WEIGHT PER 100	LB	238
PACKED WEIGHT PER 100	LB	250
NO. IN STANDARD PACKAGE		32

- 1 ENG. MGR.
- 2 ENG.
- PURCH.
- 1 MKTG.
- PLT. MGR.
- COST
- PROD.
- INSP.
- GLAZE
- BUSHING
- MAKING
- SHIP.
- ASSEM.
- MODEL
- MACH.
- 45
- TOOLING
- CER. LAB.
- 1 EL. LAB.
- Q.A.



THIS DRAWING IS THE PROPERTY OF VICTOR INSULATORS, INC. AND CONTAINS PROPRIETARY AND CONFIDENTIAL INFORMATION WHICH MUST NOT BE DUPLICATED, USED, OR DISCLOSED OTHER THAN AS EXPRESSLY AUTHORIZED BY VICTOR INSULATORS, INC.

VI INSULATORS
 VICTOR INSULATORS, INC.
 280 MAPLE AVENUE
 VICTOR, NEW YORK 14564
 TELEPHONE: (585)924-2127

VI 2614

11-09-04

TM