

16

GUY STRAIN INSULATOR

CAT. NO. VI 4606

ANSI CLASS NO. 54-3

DIMENSIONS

LEAKAGE DISTANCE IN 2.25
 MAXIMUM CABLE DIA. IN .62

MECHANICAL VALUES

TENSILE STRENGTH LB 20,000

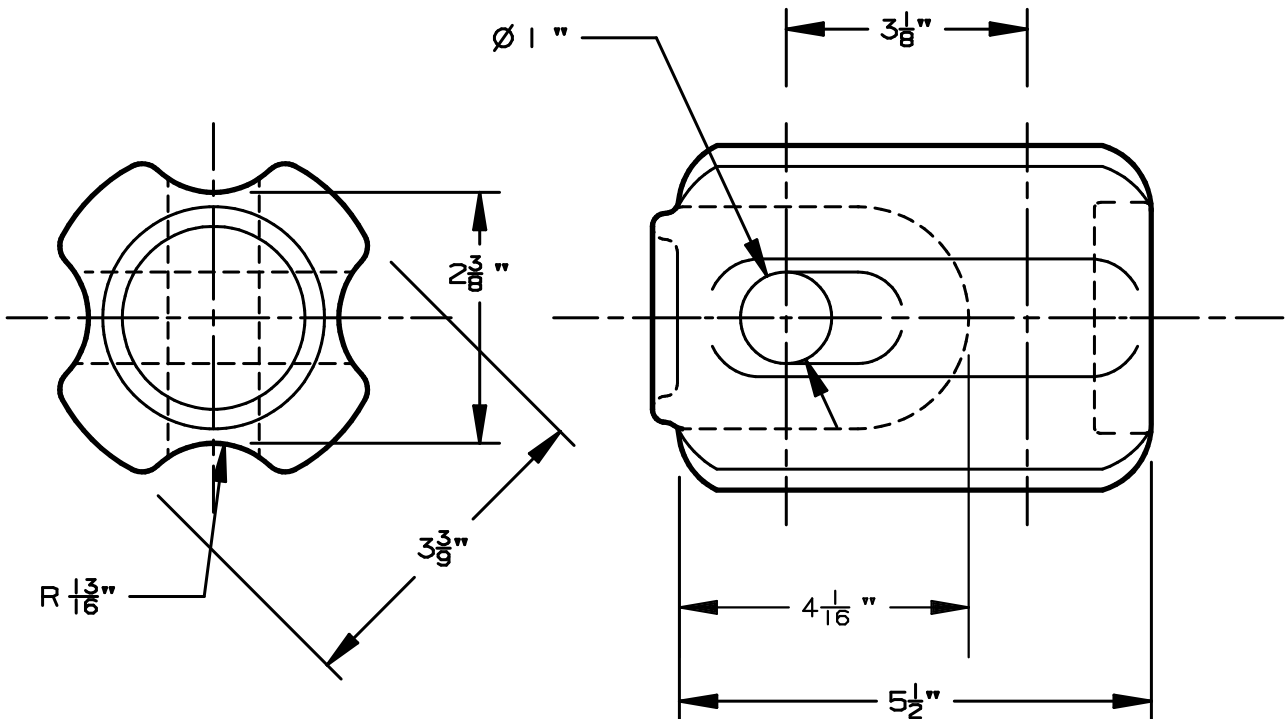
ELECTRICAL VALUES

60 HERTZ FLASHOVER-DRY kV 35
 60 HERTZ FLASHOVER-WET kV 18


PACKING INFORMATION

NET WEIGHT PER 100 LB 271
 PACKED WEIGHT PER 100 LB 287
 NO. IN STANDARD PACKAGE 24

1 ENG. MGR
 2 ENG
 PURCH.
 1 MKTG.
 PLT. MGR.
 COST
 PROD.
 INSP
 GLAZE
 BUSHING
 MAKING
 SHIP
 ASSEM
 MODEL
 MACH.
 45
 TOOLING
 CER LAB
 1 EL LAB
 Q. A.



APPROVED
 By A. E. Schwalm at 7:28 pm, Oct 31, 2013

10-31-13	TM		B	 INSULATORS VICTOR INSULATORS, INC. 280 MAPLE AVENUE VICTOR, NEW YORK 14564 TELEPHONE: (585)924-2127	VI 4606
01-24-05	TM	A			
3-18-02	TM	PPAS			

THIS DRAWING IS THE PROPERTY OF VICTOR INSULATORS, INC. AND CONTAINS PROPRIETARY AND CONFIDENTIAL INFORMATION WHICH MUST NOT BE DUPLICATED, USED, OR DISCLOSED OTHER THAN AS EXPRESSLY AUTHORIZED BY VICTOR INSULATORS, INC.

FILE: VI 4606