

STATION POST

CAT. NO. PSP-205P

15 kV 110 kV BIL

ANSI PSP-205P

DIMENSIONS:

LEAKAGE DISTANCE IN 20.5

MECHANICAL VALUES:

CANTILEVER STRENGTH LB 2,000  
 TENSION STRENGTH LB 8,500  
 TORSION STRENGTH IN-LB 6,000  
 COMPRESSION STRENGTH LB 8,500

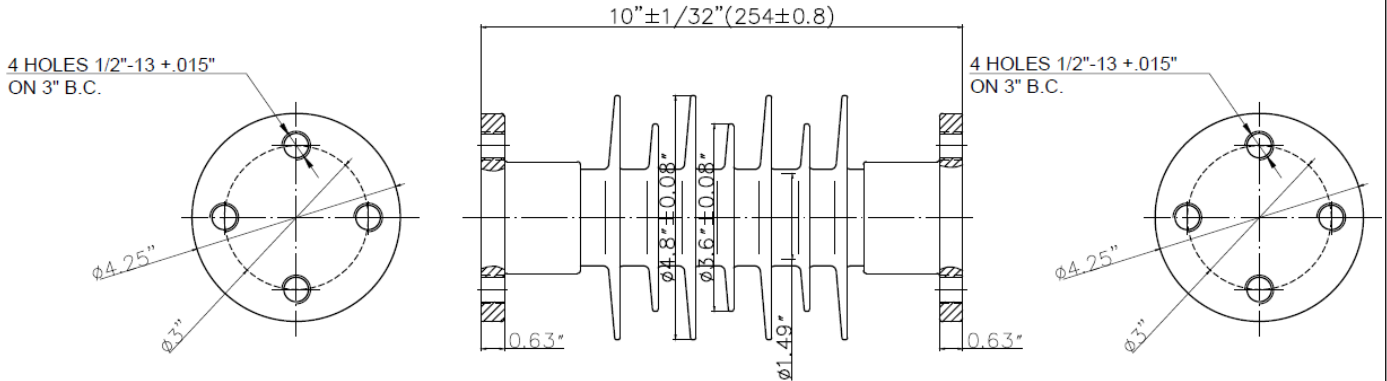
ELECTRICAL VALUES:

IMPULSE FLASHOVER-POSITIVE kV 125  
 60 HERTZ WITHSTAND-WET kV 40  
 IMPULSE WITHSTAND kV 110

RADIO INFLUENCE VOLTAGE DATA:

60 HERTZ TEST VOLTAGE TO GROUND kV 10  
 MAXIMUM R.I.V. @ 1000 kHz  $\mu$ V 50

- 1 ENG. MGR
- 2 ENG
- PURCH.
- 1 MKTG.
- PLT.MGR.
- COST
- PRD.
- INSP
- GLAZE
- BUSHING
- MAKING
- SHIP
- ASSEM
- MODEL
- MACH.
- 45
- TOOLING
- CER LAB
- 1 EL LAB
- 1 E.MEDIA



THIS DRAWING IS THE PROPERTY OF VICTOR INSULATORS, INC. AND CONTAINS PROPRIETARY AND CONFIDENTIAL INFORMATION WHICH MUST NOT BE DUPLICATED, USED, OR DISCLOSED OTHER THAN AS EXPRESSLY AUTHORIZED BY VICTOR INSULATORS, INC.

**APPROVED**  
 By A. E. Schwalm at 10:04 am, Sep 27, 2016

09-26-16		TM	
04-05-16		TM	
10-03-12		TM	



**Victor Insulators, Inc.**  
 280 Maple Avenue  
 Victor, New York 14564  
 Telephone: (585)924-2127  
 www.victorinsulators.com

**PSP-205P**

PSP-205P