

STATION POST

CAT. NO. PSP-208P

23 kV 150 kV BIL

ANSI PSP-208P

DIMENSIONS:

LEAKAGE DISTANCE IN 32

MECHANICAL VALUES:

CANTILEVER STRENGTH LB 2,000  
 TENSION STRENGTH LB 10,000  
 TORSION STRENGTH IN-LB 6,000  
 COMPRESSION STRENGTH LB 10,000

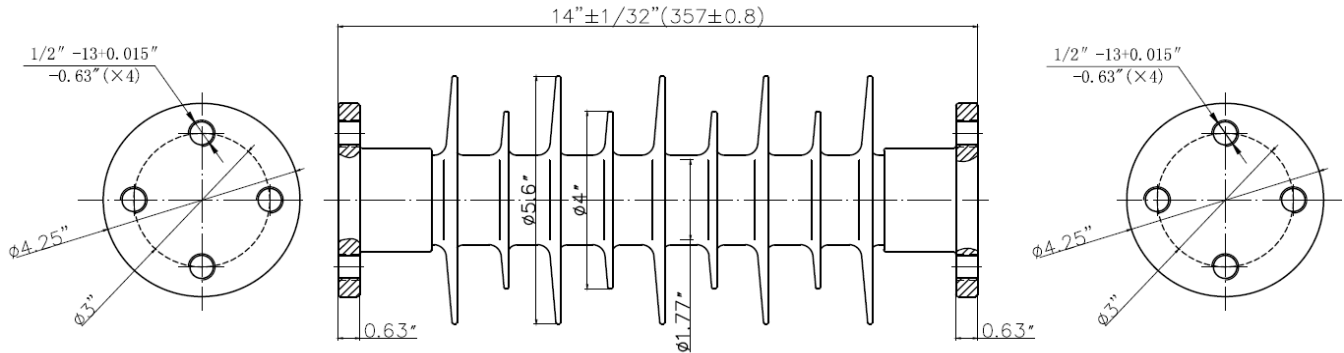
ELECTRICAL VALUES:

IMPULSE FLASHOVER-POSITIVE kV 165  
 60 HERTZ WITHSTAND-WET kV 60  
 IMPULSE WITHSTAND kV 150

RADIO INFLUENCE VOLTAGE DATA:

60 HERTZ TEST VOLTAGE TO GROUND kV 15  
 MAXIMUM R.I.V. @ 1000 kHz  $\mu$ V 100

- 1 ENG. MGR
- 2 ENG
- PURCH.
- 1 MKTG.
- PLT.MGR.
- COST
- PRD.
- INSP
- GLAZE
- BUSHING
- MAKING
- SHIP
- ASSEM
- MODEL
- MACH.
- 45
- TOOLING
- CER LAB
- 1 EL LAB
- 1 E.MEDIA



THIS DRAWING IS THE PROPERTY OF VICTOR INSULATORS, INC. AND CONTAINS PROPRIETARY AND CONFIDENTIAL INFORMATION WHICH MUST NOT BE DUPLICATED, USED, OR DISCLOSED OTHER THAN AS EXPRESSLY AUTHORIZED BY VICTOR INSULATORS, INC.

APPROVED  
 By A. E. Schwalm at 9:36 am, Apr 06, 2016

04-05-16

TM

10-03-12

TM



Victor Insulators, Inc.

280 Maple Avenue  
 Victor, New York 14564  
 Telephone: (585)924-2127  
 www.victorinsulators.com

PSP-208P