

COMPONENTS:

1. SUSPENSION T120-EE-3410-10080-LA
2. LINE POST HP-70DA-2450-7115-XX
3. SHACKLE: U-12R

APPROVED

By A. E. Schwalm at 1:22 pm, Jul 31, 2023

DIMENSIONAL VALUES

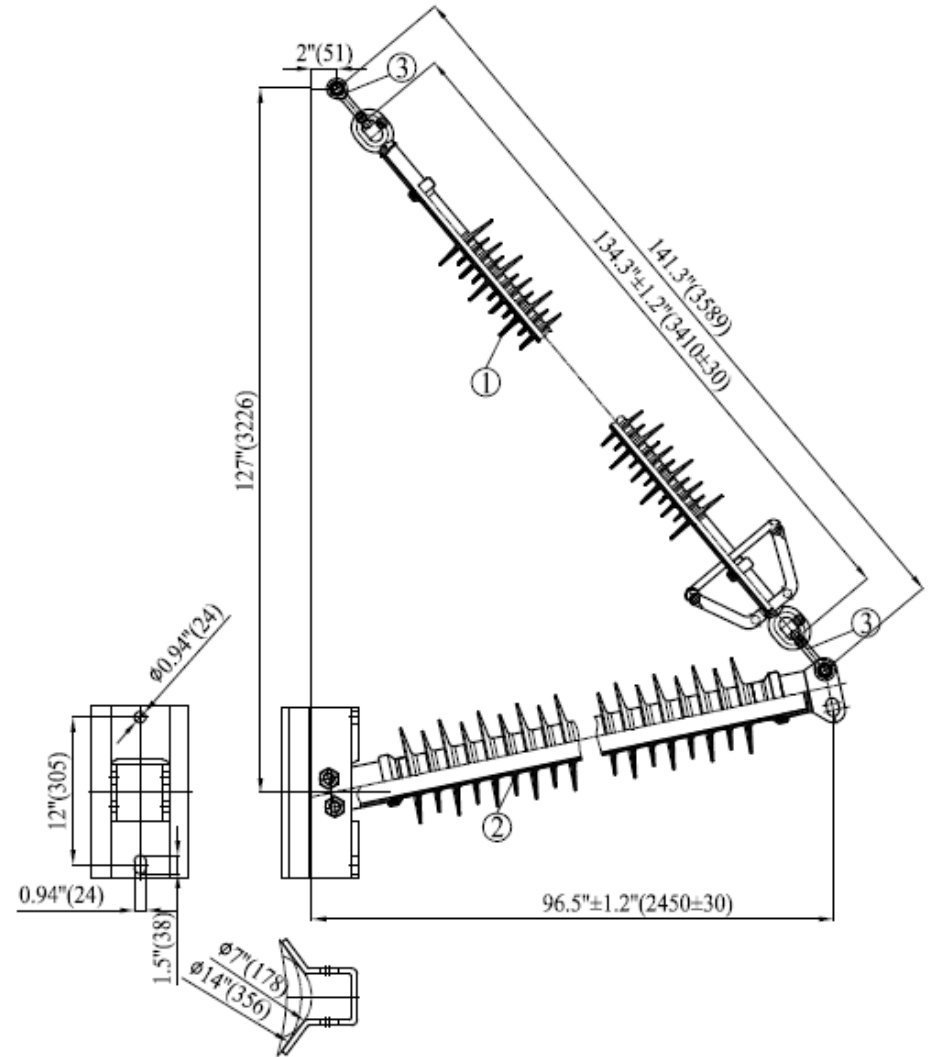
| | | |
|---------------------------|--------|--------------|
| POST SECTION LENGTH | IN(mm) | 96.5(2,450) |
| SUSPENSION SECTION LENGTH | IN(mm) | 134.3(3,410) |
| HEIGHT OF ASSEMBLY | IN(mm) | 127(3,226) |
| LENGTH OF BRACE | IN(mm) | 141.3(3,589) |
| LEAKAGE DISTANCE | IN(mm) | 280(7,115) |
| DRY ARCING DISTANCE | IN(mm) | 88.8(2,255) |

MECHANICAL VALUES

| | | |
|---------------------------|--------|--------------|
| MINIMUM VERTICAL LOAD | LB(kN) | 11,280(50.1) |
| MINIMUM TENSION LOAD | LB(kN) | 7,500(33.3) |
| MINIMUM COMPRESION LOAD | LB(kN) | 7,500(33.3) |
| MINIMUM LONGITUDINAL LOAD | LB(kN) | 930(4.1) |

ELECTRICAL VALUES

| | | |
|------------------------------|----|-------|
| RATED VOLTAGE | kV | 230 |
| LOW FREQUENCY FLASHOVER, DRY | kV | 795 |
| LOW FREQUENCY FLASHOVER, WET | kV | 670 |
| IMPULSE FLASHOVER, POSITIVE | kV | 1,190 |
| IMPULSE FLASHOVER, NEGATIVE | kV | 1,290 |



THIS DRAWING IS THE PROPERTY OF VICTOR INSULATORS, INC. AND CONTAINS PROPRIETARY AND CONFIDENTIAL INFORMATION WHICH MUST NOT BE DUPLICATED, USED, OR DISCLOSED OTHER THAN AS EXPRESSLY AUTHORIZED BY VICTOR INSULATORS, INC.

| | | |
|------------------------|----------|----|
| DATE | 07-31-23 | TM |
| SYSTEM VOLTAGE: 230 kV | | |
| BRACED POST | | |
| BP-2450-7115-DA | | |



Victor Insulators, Inc.

280 Maple Avenue
Victor, New York, 14564
Telephone: (585)924-2127
www.victorinsulators.com