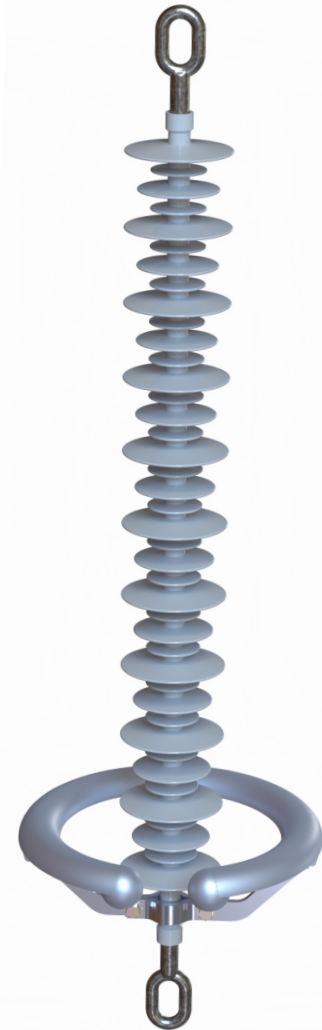




VICTOR INSULATORS, INC.

The original insulator manufacturer in North America

Polymer Catalog 2024



Distribution - Substation - Transmission



Contents

Company History.....	3
Line Hardware.....	4
Deadends.....	7
Distribution Line Post.....	8
Station Post.....	11
Transmission Line Post.....	15
Suspensions.....	17
Guy Strains.....	21
Braced Post.....	23

Contact Information

Victor Insulators Main Number

585-924-2127

VP of Sales and Marketing: John Tinsley
jtinsley@victorinsulators.com Cell: 585-430-8689

Inside Sales/Customer Service: Angel Collazo
ext. 207 acollazo@victorinsulators.com

Sales Engineer: Steph Carter ext. 294
scarter@victorinsulators.com Cell: 585-747-0631



VICTOR INSULATORS, INC.

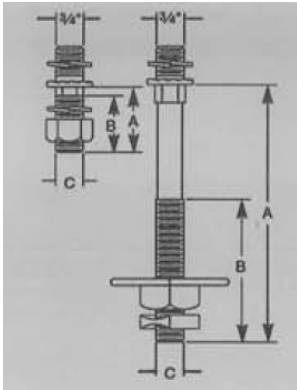
The original insulator manufacturer in North America



Line Post Hardware

Mounting Studs

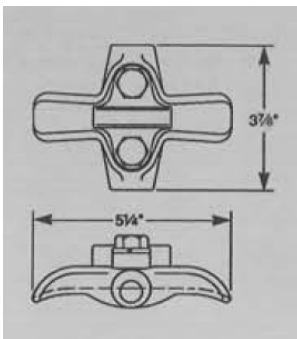
Mounting studs are available at an additional cost. Victor Insulators' studs can be used with all other manufacturers' line posts that meet ANSI standards



DIMENSIONS, WEIGHTS						
Cat. No.	Crossarm Type	Line Post Ratings kV	Dimensions			Shipping Weight - lbs
			A	B	C	
72087	Wood	34.5-69	7	4	3/4	1.50
72088	Steel	34.5-69	1 3/4	1 9/16	3/4	.56
72090	Steel	13.2-23	1 3/4	1 9/16	5/8	.45
72091	Wood	13.2-23	7	4	5/8	1.25

Clamps

Victor Insulators' yoke design will accept other manufacturer's clamps with a standard nominal 4" trunnion. Conductor clamps have been designed with reversible keepers, so that three designs of clamps will accommodate conductors ranging from .25" to 1.5" in diameter. Victor Insulators' clamps will fit any 4" spaced yoke of either vertical or horizontal design.



DIMENSIONS, WEIGHTS					
Cat. No.	Conductor Size - Inches		Dimensions - Inches		Shipping Weight - lbs
	Min	Max	Length	Width	
72157	.25	.562	5 1/4	3 7/8	.87
72158	.50	1.062	5 1/4	3 7/8	.99
72159	1.00	1.5	5 1/4	3 7/8	1.25



VICTOR INSULATORS, INC.

The original insulator manufacturer in North America



Polymer Insulators Introduction

Polymer insulators are significantly lighter than porcelain or glass insulators of the same voltage rating. This makes them easier to handle during installation and maintenance. The fiberglass rod used in polymer insulators give them high mechanical strength, allowing them to withstand the mechanical stresses imposed by wind, ice, and other environmental factors. Polymer insulators provide effective electrical insulation, preventing current leakage and flashovers even in challenging weather conditions. They have a high resistance to electrical tracking and arcing. Unlike porcelain insulators, polymer insulators are not susceptible to corrosion, making them suitable for use in harsh environments, such as coastal areas with high salt content in the air.

Polymer insulators have a hydrophobic surface, which means they repel water. This property helps prevent the accumulation of contaminants and pollutants on the insulator's surface, reducing the risk of flashovers. The smooth surface of polymer insulators is easy to clean, and they often require less maintenance compared to porcelain insulators.

Polymer transmission insulators have become a popular choice for many electrical utilities due to their durability, lightweight nature, and resistance to environmental factors.





Polymer Distribution Insulators

Polymer distribution insulators come in various designs to suit different applications within power distribution systems. Here are a few specific types of polymer distribution insulators:

Deadend Insulators: Deadend insulators are used at the ends of overhead power lines to terminate the conductor and provide insulation and support. They prevent the power line from continuing beyond a specific point. These insulators are essential for securing the conductor and ensuring electrical isolation.

Line Posts Insulators: Line post insulators are used to support power lines along their length. They are typically mounted on crossarms, brackets, or other structures and help maintain the conductor's distance from the ground and other objects. Line post insulators are commonly used in distribution and sub transmission lines.

Vertical Posts Insulators: Vertical post insulators, also known as suspension insulators, are designed to hang the power line conductors vertically. They provide both mechanical support and electrical insulation. These insulators are often used in transmission lines to handle the weight of long spans of conductors.

Universal Clamp Posts: Universal clamp post insulators are versatile insulators that can serve multiple purposes, such as providing support for conductors, acting as line spacers, or serving as deadend terminations. They are designed to accommodate various hardware and mounting configurations, making them suitable for different line applications.



VICTOR INSULATORS, INC.

The original insulator manufacturer in North America



Polymer Deadends *Guaranteed lifetime performance*

- Durable
- Reliable
- Lightweight
- Superior over molded design
- Hot Dip Galvanized hardware
- Exceeds ANSI electrical and mechanical requirements
- Resistant to impact and handling damage and vandalism



Tested in accordance with ANSI C29.18

Cat. No.	ANSI Class	Voltage	Mechanical Load (lbs.)	Number of Sheds
8215	DS-15	15kV	15,000	4
8225	DS-28	25kV	15,000	7
8235	DS-35	35kV	15,000	9
8246	DS-46	46kV	15,000	12

**For higher mechanical loads, please ask your local representative
RUS Accepted*

For more details, please visit www.victorinsulators.com



VICTOR INSULATORS, INC.

The original insulator manufacturer in North America



Polymer Line Posts

Guaranteed lifetime performance

- Lightweight
- High Mechanical Strength
- Resistance to Pollution
- Easy Installation
- Hot Dip Galvanized hardware
- Exceeds ANSI electrical and mechanical requirements
- Resistant to impact and handling damage and vandalism
- Many configurations available



**Tested in accordance
with ANSI C29.18**

Cat. No.	ANSI Class	Voltage	Cantilever Load SCL (lbs.)	Number of Sheds
VI 51-1F	51-1F	15kV	2,800	3
VI 51-2F	51-2F	25kV	2,800	7
VI 51-3F	51-3F	35kV	2,800	9
VI 51-4F	51-4F	46kV	2,800	12

**For more choices, please contact your local rep*



VICTOR INSULATORS, INC.

The original insulator manufacturer in North America



Polymer Universal Clamp Line Post

Guaranteed lifetime performance

- Durable
- Reliable
- Lightweight
- Superior over molded design
- Hot Dip Galvanized hardware
- Exceeds ANSI electrical and mechanical requirements
- Aluminum Clamp accomodates a full range of conductor sizes: .20" to 1.34"



Tested in accordance with ANSI C29.18

Cat. No.	ANSI Class	Voltage	Cantilever Load SLC (lbs.)	Number of Sheds
VI 15U	51-1C/F, 51-11, 51-21, 51-31	15kV	2800	2
VI 25U	51-2C/F, 51-12, 51-22, 51-31	25kV	2800	3
VI 35U	51-3C/F, 51-13, 51-23, 51-33	35kV	2800	4

**For more choices, please ask your local representative
RUS Accepted*

For more details, please visit www.victorinsulators.com



VICTOR INSULATORS, INC.

The original insulator manufacturer in North America



Polymer Station Posts

Guaranteed lifetime performance

Polymer station posts are used for various applications within substations to support and insulate electrical equipment and conductors. These posts offer several advantages over traditional materials like porcelain or glass, including lightweight construction, high mechanical strength, resistance to environmental factors, and improved performance.

Some of the key features of polymer station posts are:

- **Lightweight:** Polymer posts are significantly lighter than their porcelain or glass counterparts, making them easier to transport, install, and handle.
- **High Mechanical Strength:** They have high mechanical strength, which allows them to withstand various mechanical stresses, such as wind loads and vibrations, without breaking.
- **Corrosion Resistance:** Polymer insulators are resistant to environmental factors like moisture and UV radiation, reducing the risk of degradation over time.
- **Improved Pollution Performance:** They exhibit excellent pollution performance, making them suitable for substations located in polluted or coastal areas.
- **Low Maintenance:** Polymer posts require minimal maintenance compared to traditional materials, reducing overall operational costs.
- **Long Service Life:** These insulators can have a long service life, which can be an advantage in critical electrical infrastructure.
- **Versatility:** Polymer insulators come in various shapes and sizes, making them adaptable for different applications within the substation.



VICTOR INSULATORS, INC.

The original insulator manufacturer in North America



Polymer Station Posts

Guaranteed lifetime performance

- Steel zinc plated inserts
- Copper or brass inserts available
- Made from cycloaliphatic epoxy compounds and non-tracking materials
- Reduces maintenance
- Energy efficient
- Light weight
- Improves reliability



ANSI C29.19 Standard

Cat. No.	TR No.	Voltage Rating (kV)	Height (in.)	BIL	Cantilever Strength
PSP-205P	205	15	10	95	2000
PSP-208P	208	23	14	150	2000
PSP-210P	210	34.5	18	200	2000
PSP-214P	214	46	22	250	2000
PSP-216P	216	69	30	350	1500
PSP-278P	278	69	30	350	3000
PSP-286P	286	115	45	550	1700
PSP-287P	287	115	45	550	2600
PSP-288P	288	138	54	650	1400
PSP-289P	289	138	54	650	2200
PSP-291P	291	161	62	750	1200
PSP-304P	304	230	80	900	950
PSP-308P	308	230	80	900	1450

**For more details, please visit www.victorinsulators.com*



VICTOR INSULATORS, INC.

The original insulator manufacturer in North America



Polymer Station Posts

Guaranteed lifetime performance



- Customized Station Posts Configurations
- Variety of bolt circle and pattern combinations available!

Type	Section Length (mm)	Cantilever Strength (kN)	Leakage (mm)	Corona Ring
PSP	1575	5	3810	LX
PSP = Polymer Station Post	Rounded to nearest mm	Rounded to nearest kN	Rounded to nearest mm	XX = No Corona Ring LX = Line End Corona Ring XG = Ground End Corona Ring

ANSI C29.19 Standard Product Line

Cat No	BIL (kV)	Height in (mm)	Leakage in (mm)	SCL kip (kN)	Bolt Circle (in)	Bolt Pattern
PSP-254-12-5-500-XX	125	47 (254)	19 (500)	2.8 (12.5)	3	4 x 1/2"-13+0.015
PSP-559-12-5-1570-XX	250	103 (559)	61 (1570)	2.8 (12.5)	3	4 x 1/2"-13+0.015
PSP-30-3000-62-XX	350	141 (762)	62 (1575)	2.9 (13.3)	5	4-5/8"-11+.015
PSP-1143-32-2515-XX	550	211 (1143)	99 (2515)	7 (31.5)	5	4 x 5/8"-11 +0.015
PSP-1371-26-2900-XX	650	1371 (1371.6)	4 (116)	5.9 (26.6)	5	4 x 5/8"-11 +0.015
PSP-559-14-1200-XX	650	103 (559)	47 (1200)	3.1 (14)	3	4 x 1/2"-13+0.015
PSP-1575-5-3810-LX	750	291 (1575)	150 (3810)	1.2 (5.5)	5	4 x 5/8-11ufs +0.015
PSP-1575-23-4020-XX	750	291 (1575)	158 (4020)	5.1 (23)	5	4 x 5/8"-11+0.015
PSP-2032-10-5700-XX	900	375 (2030)	224 (5700)	2.3 (10.3)	5	4 x 5/8-11+.015
PSP-2032-5650-LX	900	376 (2032)	222 (5650)	2.8 (12.5)	5	4 - 5/8"-11+.015
PSP-2032-9-5700-LX	900	376 (2032)	224 (5700)	2 (9)	5	4-5/8"-11+.015
PSP-2032-5650-XX	900	376 (2032)	222 (5650)	2.8 (12.5)	5	4-5/8"-11+.015

***Contact local rep for other configurations
For more details, please visit www.victorinsulators.com*



VICTOR INSULATORS, INC.

The original insulator manufacturer in North America



Polymer Transmission

Guaranteed lifetime performance

Polymer transmission insulators are a type of electrical insulator used in high-voltage transmission and distribution systems to support and insulate overhead power lines. These insulators are made from polymer materials, typically reinforced with fiberglass or other strengthening components, and they offer several advantages over traditional porcelain or glass insulators.

Some of the key features of polymer transmission insulators are:

- Lightweight: Polymer insulators are significantly lighter than porcelain or glass insulators of the same voltage rating. This makes them easier to handle during installation and maintenance.
- High Strength: The fiberglass or other reinforcing materials used in polymer insulators give them high mechanical strength, allowing them to withstand the mechanical stresses imposed by wind, ice, and other environmental factors.
- Corrosion Resistance: Unlike porcelain insulators, polymer insulators are not susceptible to corrosion, making them suitable for use in harsh environments, such as coastal areas with high salt content in the air.
- Hydrophobic Properties: Most polymer insulators have a hydrophobic surface, which means they repel water. This property helps prevent the accumulation of contaminants and pollutants on the insulator's surface, reducing the risk of flashovers.
- Customizable Design: Manufacturers can tailor the design and color of polymer insulators to meet specific aesthetic and environmental requirements.



VICTOR INSULATORS, INC.

The original insulator manufacturer in North America



Polymer Transmission Insulators Catalog Number Keys

Guaranteed lifetime performance

1. Insulator Type		2. Mechanical Strength	
T = Suspension HP = Horizontal Line Post VP = Vertical Line Post G = Guy Strain		<i>Suspension/Guy Strain</i> SML (kN)	
		<i>Line Post</i> Rod diameter (mm)	
<i>Rounded to nearest unit</i>			
3. Tower End Fittings			
<i>Suspension</i>	<i>Guy Strain</i>	<i>Line Post</i>	
Y = Y-Clevis C = Clevis B = Ball E = Oval-Eye T = Tongue S = Socket	C = Clevis CR = Clevis w/roller TE = Thimble Eye T = Eye/Tongue	A = Cast curved B = Cast Flat C = Stud Base D = Bendable Gain Base F = Bendable Flat Base	
4. Line End Fittings			
<i>Suspension</i>	<i>Guy Strain</i>	<i>Line Post</i>	
Y = Y-Clevis C = Clevis B = Ball E = Oval-Eye T = Tongue S = Socket	C = Clevis CR = Clevis w/roller TE = Thimble Eye T = Eye/Tongue	A = Drop Tongue B = Extended Drop Tongue D = Horizontal Trunnion E = Vertical Trunnion F = F-neck UY = Universal Clamp	
5. Leakage		6. Length	
Rounded to nearest mm		Rounded to nearest mm	
7. Corona Rings or Coating			
<i>Suspension</i>	<i>Guy Strain</i>	<i>Line Post</i>	
AA = no ring LA = line end ring only AG = ground end ring only LG = line and ground end rings	AA = no coating SC = Silicone Coating	XX = no ring LX = line end ring only XG = ground end ring only LG = line and ground end rings	



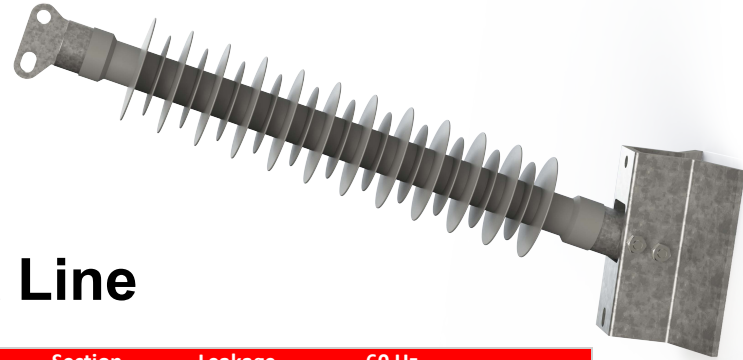
VICTOR INSULATORS, INC.

The original insulator manufacturer in North America



Polymer Line Posts *Guaranteed lifetime performance*

- Exceeds ANSI and IEC electrical and mechanical requirements
- Lightweight for easy installation
- ANSI C29.17 Compliant
- Many configurations available



69-138 kV Line Post Product Line

Voltage	Cat No	Ground Hardware	Line Hardware	SCL kip (kN)	Section Length in (mm)	Leakage Distance in (mm)	60 Hz Flashover Dry/Wet kV	CIFO Pos/Neg kV
69	HP-70FA-1239-2800-XX	Flat Base	Drop Tongue	3.95 (17.6)	48.7 (1239)	110.2 (2800)	380/345	580/690
	HP-80FD-1242-2934-XX	Flat Base	Horizontal Trunnion	4.99 (22.2)	48.8 (1242)	115.5 (2934)	380/340	590/685
	HP-90DA-1245-2820-XX	Gain Base	Drop Tongue	6.6 (29.4)	49 (1245)	111 (2820)	395/335	615/705
	HP-70DD-1138-2083-XX	Gain Base	Horizontal Trunnion	4.24 (18.9)	44.8 (1138)	82 (2083)	330/300	510/615
	HP-70DD-1302-3683-XX	Gain Base	Horizontal Trunnion	2.09 (9.3)	51.2 (1302)	145 (3683)	355/328	609/697
115/138	HP-70FA-1452-3500-XX	Flat Base	Drop Tongue	3.14 (14)	57.1 (1452)	137.7 (3500)	464/249	804/857
	HP-70FD-1524-3640-XX	Flat Base	Horizontal Trunnion	3.01 (13.4)	60 (1524)	143.3 (3640)	450/405	770/810
	HP-70FD-1780-4280-LX	Flat Base	Horizontal Trunnion	2.54 (11.3)	70 (1780)	168.5 (4280)	600/525	920/1025
	HP-70DA-1220-2770-XX	Gain Base	Drop Tongue	3.82 (17)	48 (1220)	109 (2770)	380/345	580/690
	HP-63DA-1384-3500-XX	Gain Base	Drop Tongue	1.34 (6)	54.4 (1384)	137.7 (3500)	420/395	600/630
	HP-70DA-1399-4200-LX	Gain Base	Drop Tongue	2.92 (13)	55 (1399)	165.3 (4200)	455/405	700/800
	HP-70DA-1420-3500-XX	Gain Base	Drop Tongue	3.23 (14.4)	55.9 (1420)	137.7 (3500)	455/405	700/800
	HP-80DA-1478-3785-XX	Gain Base	Drop Tongue	4.94 (22)	58.1 (1478)	149 (3785)	490/445	760/860
	HP-70DA-1514-3820-XX	Gain Base	Drop Tongue	2.92 (13)	59.6 (1514)	150.3 (3820)	490/430	760/865
	HP-70DA-1539-3200-XX	Gain Base	Drop Tongue	2.96 (13.2)	60.5 (1539)	125.9 (3200)	515/450	770/880
	HP-80DA-1625-3355-XX	Gain Base	Drop Tongue	5.01 (22.3)	63.9 (1625)	132 (3355)	545/376	854/876
	HP-70DA-1677-4180-XX	Gain Base	Drop Tongue	2.24 (10)	66 (1677)	164.5 (4180)	482/446	836/884
	HP-90DA-1770-4760-XX	Gain Base	Drop Tongue	4.94 (22)	69.6 (1770)	187.4 (4760)	490/445	760/860
	HP-70DD-1194-3000-XX	Gain Base	Horizontal Trunnion	3.91 (17.4)	47 (1194)	118.1 (3000)	355/320	545/655
	HP-80DD-1456-3000-XX	Gain Base	Horizontal Trunnion	3.21 (14.3)	57.3 (1456)	118.1 (3000)	455/405	700/800
	HP-80DD-1506-3000-XX	Gain Base	Horizontal Trunnion	2.81 (12.5)	59.2 (1506)	118.1 (3000)	430/390	690/870
	HP-70DD-1514-3820-LX	Gain Base	Horizontal Trunnion	2.92 (13)	59.6 (1514)	150.3 (3820)	440/390	730/790
	HP-80DD-1516-3785-XX	Gain Base	Horizontal Trunnion	4.94 (22)	59.6 (1516)	149 (3785)	490/445	760/860
	HP-70DD-1524-3429-XX	Gain Base	Horizontal Trunnion	1.61 (7.2)	60 (1524)	135 (3429)	460/410	800/900
	HP-70DD-1539-3785-XX	Gain Base	Horizontal Trunnion	4.99 (22.2)	60.5 (1539)	149 (3785)	490/445	765/860
	HP-90DD-1555-3530-XX	Gain Base	Horizontal Trunnion	5.28 (23.5)	61.2 (1555)	138.9 (3530)	461/427	800/854
	HP-70DD-1560-3680-XX	Gain Base	Horizontal Trunnion	2.9 (12.9)	61.4 (1560)	144.8 (3680)	515/450	770/880
	HP-70DE-1260-2896-XX	Gain Base	Vertical Trunnion	3.25 (14.5)	49.6 (1260)	114 (2896)	455/405	700/800
	HP-70AD-1388-3530-XX	Cast Curved	Horizontal Trunnion	3.46 (15.4)	54.6 (1388)	138.9 (3530)	429/398	742/809
	VP-70CE-1750-4500-LX	Stud Base	Vertical Trunnion	2.45 (10.9)	68.8 (1750)	177.1 (4500)	600/525	920/1025

***Contact local rep for insulators over 345kV or other configurations
For more details, please visit www.victorinsulators.com*



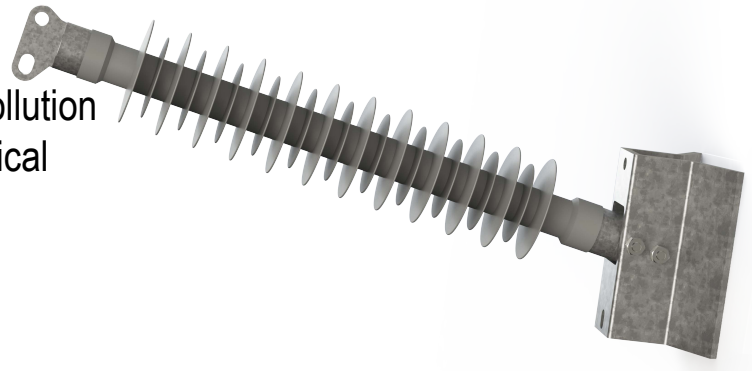
VICTOR INSULATORS, INC.

The original insulator manufacturer in North America



Polymer Line Posts *Guaranteed lifetime performance*

- Field tested and proven performance
- Monolithic silicone coating, protects against pollution
- Exceeds ANSI and IEC electrical and mechanical requirements
- Up to 4.7" (120mm) rod diameter available



161-345kV Line Post Product Line

Voltage	Cat No	Ground Hardware	Line Hardware	SCL kip (kN)	Section Length in (mm)	Leakage Distance in (mm)	60 Hz Flashover Dry/Wet kV	CIFO Pos/Neg kV
161	HP-70FA-1720-4230-XX	Flat Base	Drop Tongue	2.6 (11.6)	67.7 (1720)	166.5 (4230)	580/510	885/990
	HP-70FA-1839-4730-XX	Flat Base	Drop Tongue	2.4 (10.7)	72.4 (1839)	186.2 (4730)	625/540	955/1065
	HP-70DA-1478-3590-XX	Gain Base	Drop Tongue	3.03 (13.5)	58.1 (1478)	141.3 (3590)	425/485	735/840
	HP-70DA-1659-4160-XX	Gain Base	Drop Tongue	2.64 (11.9)	65.3 (1659)	163.7 (4160)	565/495	855/950
	HP-70DA-1727-4420-XX	Gain Base	Drop Tongue	1.57 (7)	67.9 (1727)	174 (4420)	500/580	955/1008
	HP-70DA-1839-4740-XX	Gain Base	Drop Tongue	2.4 (10.7)	72.4 (1839)	186.6 (4740)	625/540	955/1065
	HP-70DA-1881-4780-XX	Gain Base	Drop Tongue	2.24 (10)	74 (1881)	188.1 (4780)	620/545	960/1040
	HP-81DD-1700-3780-XX	Gain Base	Horizontal Trunnion	2.74 (12.2)	66.9 (1700)	148.8 (3780)	565/495	900/965
	HP-90DD-1811-4800-XX	Gain Base	Horizontal Trunnion	4.33 (19.3)	71.2 (1811)	188.9 (4800)	558/514	973/1015
	HP-90DD-1850-5016-XX	Gain Base	Horizontal Trunnion	4 (17.8)	72.8 (1850)	197.4 (5016)	645/585	1005/1105
230	HP-70FA-2416-6650-LX	Flat Base	Drop Tongue	1.84 (8.2)	95.1 (2416)	261.8 (6650)	789/713	1388/1409
	HP-70FD-2200-6230-LX	Flat Base	Horizontal Trunnion	1.97 (8.8)	86.6 (2200)	245.2 (6230)	765/650	1190/1290
	HP-70DA-2200-6240-LX	Gain Base	Drop Tongue	1.97 (8.8)	86.6 (2200)	245.6 (6240)	765/650	1190/1290
	HP-70DA-2223-6270-LX	Gain Base	Drop Tongue	2 (8.9)	87.5 (2223)	246.8 (6270)	722/656	1268/1294
	HP-70DD-2430-6840-LX	Gain Base	Horizontal Trunnion	1.68 (7.5)	95.6 (2430)	269.2 (6840)	800/700	1340/1435
345	HP-100FA-3252-9440-LX	Flat Base	Drop Tongue	3.55 (15.8)	128 (3252)	371.7 (9440)	1105/920	1850/1945
	HP-70FA-2893-8090-LX	Flat Base	Drop Tongue	1.46 (6.5)	113.8 (2893)	318.5 (8090)	970/830	1600/1680
	HP-90FA-3073-8890-LX	Flat Base	Drop Tongue	2.42 (10.8)	120.9 (3073)	350 (8890)	1050/920	1700/1790
	HP-70DA-3043-7214-LX	Gain Base	Drop Tongue	1.37 (6.1)	119.8 (3043)	284 (7214)	1055/855	1685/1770
	HP-100FA-2926-8320-LX	Flat Base	Drop Tongue	3.95 (17.6)	115.2 (2926)	327.6 (8320)	1020/840	1665/1740

***Contact local rep for other configurations
For more details, please visit www.victorinsulators.com*



VICTOR INSULATORS, INC.
The original insulator manufacturer in North America



Polymer Suspensions *Guaranteed lifetime performance*

- Exceeds ANSI and IEC electrical and mechanical requirements
- Made with high quality hydrophobic silicone polymer
- Tested according to ANSI C29.12 Standards



69 kV Suspension Product Line

Catalog No.	Tower End Hardware	Line End Hardware	Section Length in (mm)	Leakage in (mm)	SML kip (kN)	60-Hz Flashover Dry/Wet kV	CIFO Pos/Neg kV
T90-YB-945-2131-AA	Y-CLEVIS	BALL	37.2 (945)	83.8 (2131)	20 (90)	285/215	460/490
T111-YB-899-1545-AA	Y-CLEVIS	BALL	35.3 (899)	60.8 (1545)	25 (111)	273/247	475/510
T112-YB-915-2000-AA	Y-CLEVIS	BALL	36 (915)	78.7 (2000)	25 (112)	310/275	460/490
T111-YE-941-1800-AA	Y-CLEVIS	OVAL-EYE	37 (941)	70.8 (1800)	25 (111)	250/230	330/350
T112-YB-947-2100-AA	Y-CLEVIS	BALL	37.2 (947)	82.6 (2100)	25 (112)	269/243	468/503
T112-CT-977-2250-AA	Y-CLEVIS	TONGUE	38.4 (977)	88.5 (2250)	25 (112)	330/290	490/500
T112-YB-1023-2500-AA	Y-CLEVIS	BALL	40.2 (1023)	98.4 (2500)	25 (112)	310/262	497/541
T111-YB-1024-1545-AA	Y-CLEVIS	BALL	40.3 (1024)	60.8 (1545)	25 (111)	273/247	475/510
T111-YB-1025-2300-AA	Y-CLEVIS	BALL	40.3 (1025)	90.5 (2300)	25 (111)	355/310	535/565
T111-YB-1034-1930-AA	Y-CLEVIS	BALL	40.7 (1034)	75.9 (1930)	25 (111)	310/295	460/505
T111-YB-1059-1951-AA	Y-CLEVIS	BALL	41.6 (1059)	76.8 (1951)	25 (111)	301/333	578/617
T112-YB-1072-2164-AA	Y-CLEVIS	BALL	42.2 (1072)	85.1 (2164)	25 (112)	327/295	566/665
T112-YB-1181-2890-AA	Y-CLEVIS	BALL	46.4 (1181)	113.7 (2890)	25 (112)	355/310	535/565
T112-YB-1335-2794-AA	Y-CLEVIS	BALL	52.5 (1335)	110 (2794)	25 (112)	460/435	730/745
T112-YB-1668-3500-AA	Y-CLEVIS	BALL	65.6 (1668)	137.7 (3500)	25 (112)	560/525	900/900
T120-YB-871-1600-AA	Y-CLEVIS	BALL	34.2 (871)	62.9 (1600)	26 (120)	245/240	390/410
T133-SB-1115-2400-AA	SOCKET	BALL	43.8 (1115)	94.4 (2400)	30 (134)	335/325	546/560

***Contact local rep for other configurations
For more details, please visit www.victorinsulators.com*



VICTOR INSULATORS, INC.

The original insulator manufacturer in North America



Polymer Suspensions *Guaranteed lifetime performance*

- Lightweight for easy installation
- Field tested and proven performance
- Does not shatter, impact resistant



115-138 kV Suspension Product Line

Voltage	Catalog No.	Tower End Hardware	Line End Hardware	Section Length in (mm)	Leakage in (mm)	SML kip (kN)	60-Hz Flashover Dry/Wet kV	CIFO Pos/Neg kV
115	T70-BS-1168-2336-AA	SOCKET	BALL	45.9 1168)	91.9 2336)	15 (70)	365/310	610/585
	T111-EB-1188-3000-AA	OVAL-EYE	BALL	46.7 1188)	118.1 3000)	25 (111)	370/295	605/595
	T111-EE-1765-4300-AA	OVAL-EYE	OVAL-EYE	69.4 1765)	169.2 4300)	25 (111)	585/545	810/810
	T111-YB-1100-2401-AA	Y-CLEVIS	BALL	43.3 1100)	94.5 2401)	25 (111)	385/340	585/620
	T111-YB-1867-5170-AA	Y-CLEVIS	BALL	73.5 1867)	203.5 5170)	25 (111)	621/545	1048/1103
	T111-YB-1998-5310-LA	Y-CLEVIS	BALL	78.6 (1998)	209 (5310)	25 (111)	655/590	960/970
	T133-EE-2779-7780-AA	OVAL-EYE	OVAL-EYE	109.4 2779)	306.2 7780)	30 (133)	955/855	1535/1620
	T133-YB-1676-4330-AA	Y-CLEVIS	BALL	65.9 1676)	170.4 4330)	30 (133)	547/484	903/960
138	T222-YB-1732-4570-AA	Y-CLEVIS	BALL	68.1 1732)	179.9 4570)	50 (222)	560/530	890/920
	T112-CT-1307-3000-AA	CLEVIS	TONGUE	51.4 1307)	118.1 3000)	25 (112)	445/395	670/685
	T111-EE-1417-3150-AA	OVAL-EYE	OVAL-EYE	55.7 1417)	124 (3150)	25 (111)	441/395	695/710
	T111-EE-1501-3710-AA	OVAL-EYE	OVAL-EYE	59 (1501)	146 (3710)	25 (111)	465/455	740/740
	T111-SB-1859-4750-LA	SOCKET	BALL	73.1 (1859)	187 (4750)	25 (111)	635/585	900/905
	T112-YB-1080-3000-AA	Y-CLEVIS	BALL	42.5 1080)	118.1 3000)	25 (112)	595/605	370/350
	T111-YB-1219-2360-AA	Y-CLEVIS	BALL	47.9 1219)	92.9 2360)	25 (111)	640/655	394/355
	T111-YB-1257-3000-AA	Y-CLEVIS	BALL	49.4 1257)	118.1 3000)	25 (111)	420/370	645/680
	T112-YB-1337-2800-AA	Y-CLEVIS	BALL	52.6 1337)	110.2 2800)	25 (112)	700/705	435/385
	T111-YE-1460-3415-AA	Y-CLEVIS	OVAL-EYE	57.4 1460)	134.4 3415)	25 (111)	595/650	470/415
	T111-YB-1501-3700-AA	Y-CLEVIS	BALL	59 (1501)	145.6 3700)	25 (111)	455/480	765/765
	T111-YB-1654-4200-AA	Y-CLEVIS	BALL	65.1 1654)	165.3 4200)	25 (111)	535/505	870/870
	T111-YB-1811-4650-AA	Y-CLEVIS	BALL	71.2 (1811)	183 (4650)	25 (111)	580/555	960/970
	T120-YB-1229-2800-AA	Y-CLEVIS	BALL	48.3 1229)	110.2 2800)	26 (120)	390/370	645/660
	T120-YB-1390-2340-AA	Y-CLEVIS	BALL	54.7 1390)	92.1 2340)	26 (120)	485/335	780/790
	T120-YB-1450-3800-LA	Y-CLEVIS	BALL	57 (1450)	149.6 3800)	26 (120)	370/465	745/745
	T133-EB-1956-5200-AA	OVAL-EYE	BALL	77 (1956)	204.7 5200)	30 (133)	630/610	1000/1050
	T133-YB-1500-3500-AA	Y-CLEVIS	BALL	59 (1500)	137.7 3500)	30 (133)	790/835	510/450
	T133-YB-1696-4570-LA	Y-CLEVIS	BALL	66.7 1696)	179.9 4570)	30 (133)	550/515	890/890
	T133-YB-1831-5150-AA	Y-CLEVIS	BALL	72 (1831)	202.7 5150)	30 (133)	625/580	1000/1005
T222-YB-1675-4280-LA	Y-CLEVIS	BALL	65.9 1675)	168.5 4280)	50 (222)	530/480	855/855	
T222-YB-2181-5730-LA	Y-CLEVIS	BALL	85.8 2181)	225.5 5730)	50 (222)	700/615	1090/1150	

***Contact local rep for other configurations
For more details. please visit www.victorinsulators.com*



VICTOR INSULATORS, INC.

The original insulator manufacturer in North America



Polymer Suspensions *Guaranteed lifetime performance*

- Lightweight for easy installation
- Monolithic silicone coating, protects against pollution
- Compliant with ANSI C29.12



161-230 kV Suspension Product Line

Voltage	Catalog No.	Tower End Hardware	Line End Hardware	Section Length in (mm)	Leakage in (mm)	SML kip (kN)	60-Hz Flashover Dry/Wet kV	CIFO Pos/Neg kV
161	T111-EE-1570-3740-AA	OVAL-EYE	OVAL-EYE	61.8 1570)	147.2 3740)	25 (111)	497/443	849/898
	T111-YB-1654-3700-LA	Y-CLEVIS	BALL	65.1 1654)	145.6 3700)	25 (111)	545/505	890/890
	T111-YB-1654-3689-AA	Y-CLEVIS	BALL	65.1 1654)	145.2 3689)	25 (111)	560/525	900/900
	T111-YB-1660-3505-LA	Y-CLEVIS	BALL	65.3 1660)	137.9 3505)	25 (111)	545/505	890/890
	T111-YB-1913-5220-AA	Y-CLEVIS	BALL	75.3 1913)	205.5 5220)	25 (111)	672/585	1130/1186
	T111-EE-2027-5280-AA	Y-CLEVIS	BALL	79.8 2027)	207.8 5280)	25 (111)	669/583	1124/1180
	T111-YB-2028-3489-AA	Y-CLEVIS	BALL	79.8 2028)	137.3 3489)	25 (111)	558/494	1000
	T120-YB-1654-3700-LA	Y-CLEVIS	BALL	65.1 1654)	145.6 3700)	26 (120)	545/505	890/890
	T134-YB-1677-3700-AA	Y-CLEVIS	BALL	66 (1677)	145.6 3700)	30 (134)	555/491	942/994
	T133-YB-1831-4600-AA	Y-CLEVIS	OVAL-EYE	72 (1831)	181.1 4600)	30 (133)	625/585	1010/1010
	T133-YB-1857-3861-LA	Y-CLEVIS	BALL	73.1 (1857)	152 (3861)	30 (133)	600/555	990/985
	T133-YB-1859-5225-AA	Y-CLEVIS	BALL	73.1 1859)	205.7 5225)	30 (133)	634/555	1070/1125
	T160-YB-1970-5530-AA	Y-CLEVIS	BALL	77.5 1970)	217.7 5530)	35 (160)	658/574	1107/1163
	T222-YB-2035-5600-AA	SOCKET	BALL	80.1 2035)	220.4 5600)	49 (222)	680/605	1075/1135
T222-EB-1766-3479-AA	Y-CLEVIS	BALL	69.5 1766)	136.9 3479)	49 (222)	560/525	900/900	
230	T80-BS-2044-4088-AA	SOCKET	BALL	80.4 2044)	160.9 4088)	17 (80)	670/580	1105/1105
	T111-YB-1943-5250-LA	OVAL-EYE	OVAL-EYE	76.4 1943)	206.6 5250)	25 (111)	650/605	1055/165
	T111-YB-2743-8000-LA	SOCKET	BALL	107.9 2743)	314.9 8000)	25 (111)	925/850	1520/1540
	T112-BS-2044-3960-AG	Y-CLEVIS	BALL	80.4 2044)	155.9 3960)	25 (112)	670/580	1105/1105
	T111-EB-2184-5700-LA	Y-CLEVIS	BALL	85.9 2184)	224.4 5700)	25 (111)	765/665	1245/1305
	T160-YB-2258-6020-LA	Y-CLEVIS	BALL	88.8 (2258)	237 (6020)	25 (111)	758/651	1264/1323
	T111-YB-2418-6590-LA	Y-CLEVIS	BALL	95.1 2418)	259.4 6590)	25 (111)	811/691	1347/1407

***Contact local rep for other configurations
For more details, please visit www.victorinsulators.com*



VICTOR INSULATORS, INC.

The original insulator manufacturer in North America



Polymer Suspensions *Guaranteed lifetime performance*

- Injection-molded manufacturing process
- Over-molded designs available
- Up to 51 foot (15.6 meter) insulators available!



230 (cont) - 345 kV Suspension Product Line

Voltage	Catalog No.	Tower End Hardware	Line End Hardware	Section Length in (mm)	Leakage in (mm)	SML kip (kN)	60-Hz Flashover Dry/Wet kV	CIFO Pos/Neg kV
230	T120-EE-3127-5620-LA	SOCKET	BALL	123.1 3127)	221.2 5620)	26 (120)	900/802	1583/1597
	T120-EB-2602-5309-LA	Y-CLEVIS	BALL	102.4 2602)	209 5309)	26 (120)	805/735	1315/1335
	T133-YE-2489-7350-LA	CLEVIS	TONGUE	97.9 2489)	289.3 7350)	30 (133)	825/735	1310/1385
	T134-YB-2780-6112-LA	OVAL-EYE	BALL	109.4 2780)	240.6 6112)	30 (134)	780/750	1442/1481
	T134-YB-2437-5890-LA	SOCKET	BALL	95.9 2437)	231.8 5890)	30 (134)	758/651	1264/1323
	T133-YB-1943-5250-LA	Y-CLEVIS	OVAL-EYE	76.4 (1943)	206.6 (5250)	30 (133)	665/615	1070/1075
	T134-YB-2250-6200-LA	Y-CLEVIS	BALL	88.5 (2250)	244 (6200)	30 (134)	780/700	1245/1315
	T133-SB-2300-8400-LA	Y-CLEVIS	BALL	90.5 2300)	330.7 8400)	30 (133)	820/735	1310/1385
	T133-SB-2337-4084-LA	Y-CLEVIS	BALL	92 (2337)	160.7 4084)	30 (133)	762/655	1271/1330
	T160-BS-2044-3960-AG	SOCKET	BALL	80.4 2044)	155.9 3960)	35 (160)	670/580	1025/1015
	T222-YB-2743-7990-LA	SOCKET	BALL	107.9 2743)	314.5 7990)	50 (222)	925/850	1520/1545
	T222-YB-2290-6100-LA	Y-CLEVIS	BALL	90.1 2290)	240.1 6100)	50 (222)	787/673	1309/1368
	T222-SB-2474-6770-LA	Y-CLEVIS	BALL	97.4 2474)	266.5 6770)	50 (222)	808/688	1341/1401
	T223-CT-2561-7590-LG	Y-CLEVIS	BALL	100.8 2561)	298.8 7590)	50 (223)	700/650	1100/1200
	T223-EB-2895-5588-LA	Y-CLEVIS	BALL	113.9 2895)	220 5588)	50 (223)	942/800	1547/1611
	345	T222-YB-3330-10130-LG	Y-CLEVIS	BALL	131.1 3330)	398.8 10130)	30 (133)	1115/1000
T133-YB-3355-10320-LG		Y-CLEVIS	BALL	132 3355)	406.2 10320)	30 (133)	1075/980	1820/1855
T222-SB-2713-7112-LG		SOCKET	BALL	106.8 2713)	280 7112)	50 (222)	830/790	1292/1360
T222-SB-2785-8030-LG		SOCKET	BALL	109.6 2785)	316.1 8030)	50 (222)	830/790	1050/1360
T222-SB-3227-9670-LG		SOCKET	BALL	127 3227)	380.7 9670)	50 (222)	925/1015	1725/1755
T223-YB-3251-9670-LG		Y-CLEVIS	BALL	127.9 3251)	380.7 9670)	50 (223)	1005/900	1630/1720
T222-YB-3277-2810-LA		Y-CLEVIS	BALL	129 3277)	110.6 2810)	50 (222)	1035/950	1765/1800
T223-TB-3485-10400-LG		Y-CLEVIS	BALL	137.2 3485)	409.4 10400)	50 (223)	900/790	1430/1520
T223-YB-3675-11050-LG	Y-CLEVIS	BALL	144.6 3675)	435 11050)	50 (223)	1115/1000	1900/2005	

***Contact local rep for other configurations and voltages
For more details, please visit www.victorinsulators.com*



VICTOR INSULATORS, INC.

The original insulator manufacturer in North America



Polymer Guy Strains *Guaranteed lifetime performance*

- Lightweight for easy installation
- Field tested and proven performance
- Does not shatter, impact resistant
- Silicone coating provides greater protection
- Many configurations available



Polymer Guy Strain Product Line

SML lbs (kN)	Catalog No.	Section Length inches (mm)	Insulated Length inches (mm)	Hardware	Hardware
15K (67)	G66-CRC-2235-1981-SC	88 (2235)	78 (1981)	Clevis	Clevis w/roller
15K (70)	G70-TECR-541-271-AA	21.3 (541)	10.67 (271)	Thimble Eye	Clevis w/roller
21K (100)	G100-CRCR-1679-1370-SC	66.1 (1679)	53.94 (1370)	Clevis w/roller	Clevis w/roller
21K (100)	G100-TT-466-284-AA	18.35 (466)	11.18 (284)	Eye	Eye
27K (120)	G120-CRCR-2220-1981-SC	8.66 (2220)	78 (1981)	Clevis w/roller	Clevis w/roller
30K (134)	G134-CRCR-1220-914-AA	48.03 (1220)	35.98 (914)	Clevis w/roller	Clevis w/roller
30K (134)	G134-CC-2311-2049-SC	90.98 (2311)	80.67 (2049)	Clevis	Clevis
30K (134)	G134-CCR-2311-2004-SC	90.98 (2311)	78.90 (2004)	Clevis	Clevis w/roller

*For more details, please visit www.victorinsulators.com
or contact your local representative*



VICTOR INSULATORS, INC.
The original insulator manufacturer in North America





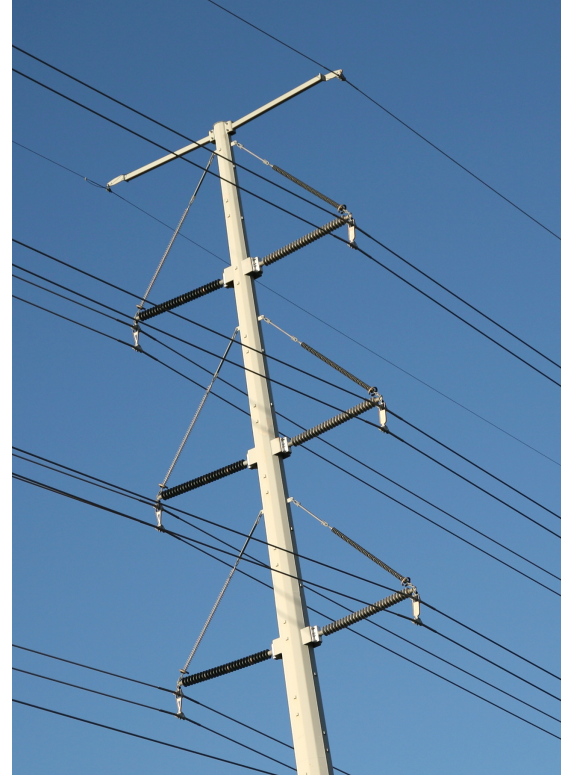
Polymer Braced Post

Guaranteed lifetime performance

Polymer braced post insulators are a type of insulator assembly composed of a line post and a suspension. They offer several advantages over using only a line post or suspension

Some of the key features of polymer braced posts are:

- Reduce ROW: Reduces the distance from the line to the pole due to rigid connections
- Increased Tower Span: Higher load capacity allows for more distance between towers
- Higher Strength: Capacity of braced post is higher than a line post alone due to utilizing the suspension's strength
- Customizable Design: Manufacturers can tailor the design to meet specific mechanical, electrical, and environmental requirements.



Type	Post Section Length (mm)	Leakage (mm)	Tower End fitting	Line End fitting
BP	2432	6670	D	A
BP = Braced Post	Rounded to nearest mm	Rounded to nearest mm	A = Cast curved B = Cast Flat C = Stud Base D = Bendable Gain Base F = Bendable Flat Base	A = Drop Tongue B = Extended Drop Tongue SP = Special Fitting



VICTOR INSULATORS, INC.

The original insulator manufacturer in North America



Polymer Braced Post

Guaranteed lifetime performance

- Increased strength capacity compared to line post alone
- Reduces ROW compared to suspension insulator alone
- Made with high quality hydrophobic silicone polymer
- Lightweight
- Easy installation
- Customizable; size, shape, and bracing arrangements
- Monolithic silicone coating, protects against pollution
- Customized configurations and other assembly types available



Polymer Braced Post Product Line

Voltage	Cat No	Line Post	Suspension	Post Section Length in (mm)	Pole Hole Spacing in (mm)	Max Vertical Load lbs (kN)	
89		BP-1142-2200-DA	HP-70DA-1142-2200-XX	T120-1350-2200-AA	44.96 (1142)	56.7 (1440)	11,100 (49)
115/138		BP-1420-3540-FA	HP-70FA-1420-3540-XX	T120-EE-1875-4930-AA	1420 (1420)	74 (1880)	11,100 (49.4)
		BP-1561-4050-DA	HP-70DA-1561-4050-XX	T111-EE-1778-4600-AA	1561 (1561)	70.35 (1787)	10,100 (45)
		BP-1452-3500-FA	HP-70FA-1452-3500-XX	T111-EE-2340-6470-LA	1452 (1452)	80.7 (2050)	11,000 (49)
		BP-1500-3800-FA	HP-70FA-1500-3800-XX	T120-YS-1605-4250-LA	1500 (1500)	62.6 (1590)	11,300 (50.4)
		BP-1625-4140-DA	HP-70DA-1625-4140-XX	T111-EE-1982-5240-LA	1625 (1625)	71.3 (1810)	9,900 (44)
161		BP-1527-3650-FA	HP-70FA-1527-3650-XX	T120-YB-1483-4700-LA	1527 (1527)	74.8 (1900)	9,900 (44)
		BP-1619-4284-DA	HP-70DA-1619-4290-XX	T111-YB-1853-5150-LA	1619 (1619)	78 (1981)	9,930 (44)
		BP-1881-4780-DA	HP-70DA-1881-4780-XX	T111-EE-2337-6020-LA	1881 (1881)	83.4 (2118)	10,000 (44)
230		BP-2362-6426-FA	HP-64FA-2362-6426-XX	T111-YB-2710-7925-LA	2362 (2362)	151 (3835.4)	9,500 (42.7)
		BP-2432-6670-FA	HP-70FA-2432-6670-XX	T111-EE-3088-8770-LA	2432 (2432)	108.1 (2745)	9,300 (41.6)
		BP-2450-7115-DA	HP-70DA-2450-7115-XX	T120-EE-3410-10080-LA	2450 (2450)	127 (3226)	11,200 (50.1)
345		BP-3453-10280-FA	HP-90FA-3453-10280-LG	T222-YB-4292-13100-LG	3453 (3453)	156 (3962)	11,000 (48.9)

***Contact local rep for other assembly types, different Braced Post configurations and for assemblies over 345 kV
For more details, please visit www.victorinsulators.com*



VICTOR INSULATORS, INC.

The original insulator manufacturer in North America



Notes



VICTOR INSULATORS, INC.

The original insulator manufacturer in North America



Victor Insulators Inc.

280 Maple Ave

Victor, NY 14564

USA

Phone: 585-924-2127

Fax: 585-924-7906